



EDEN KILLER WHALE MUSEUM/ 02 64962094/ EMAIL [promo@killerwhalemuseum.com.au](mailto:promo@killerwhalemuseum.com.au)

## Special Interest Articles:

- ❖ M80 NEWS
- ❖ STORAGE SHELVING REPLACED
- ❖ FLAGMAST REPAIR
- ❖ CAVALCADE PROGRESS
- ❖ EDEN SCOUTS 80 TOO!

## Farewell to Valuable Volunteers

3<sup>rd</sup> March 2011 was Aileen Bowles' last day at her voluntary librarianship. Aileen had volunteered at the museum for almost 20 years and had managed the library for the majority of that time. Early on Aileen participated with catering for functions held at the museum also assisting with conservation and research tasks, but it was the library where Aileen found her niche. When computer recording of the collection was embarked upon Aileen took this in her stride attending the Mosaic Workshops and learning to use the software to record the library books as well. Together with Carole Edwards Aileen has opened the Museum's Library Monday and Thursday mornings for years now and assisted hundreds of people with their research. Good storage and filing systems have been established in the library with books, CD's, DVD's and VHS

tapes all being accommodated. The librarians have also been responsible for much of the ongoing cataloguing and storage of Magnet Newspapers.

Aileen's dedication and valuable contribution is greatly appreciated by all at the museum, and we wish her and John all the best.

**Right:** Aileen with husband John Bowles receives an appreciation certificate.



**Below:** Members enjoy a cuppa with Aileen and John. L to R; Rob Whiter, John Bowles, Jack Dickenson, Jenny Drenkhahn, Aileen Bowles, Marg Sheaves, Carole Edwards, Bob Sykes, June Whalley, Phil McGrath, Rosalie Dickenson



**Below:** L to R; Jody White, Stephanie Rawlings Jenny Drenkhahn, Valma Barber, Trish Lamacraft, Celia Hannon. Front; Mavis Wasley, Elsie Masters, Lee Mulcahy, Jane Adam, Anne Buljan, Norma McGregor, Margaret Sheaves.

It was also with a heavy heart that we said goodbye to Lee Mulcahy after the Friends Meeting in April. Lee has been an active Friend of the museum firstly transcribing oral histories and later "learning the ropes" and guiding tours through the lighthouse and the museum galleries. Her contribution is greatly appreciated and will also be sadly missed. We wish Lee well in her new home near Gosford.



**studdingsail :***n*

(Transport / Nautical Terms) *Nautical* a light auxiliary sail set outboard on spars on either side of a square sail Also called **stunsail stuns'l**

**Flagging flags!**

With our supply of Eden Flags almost exhausted some preventive measures have been taken to help lengthen their life span on the flagmast.

Rob and Peter Whiter have fitted **stunsail booms** to the yardarms on the mast. These will take the flags out wider and prevent them from hitting

the stays and wearing through in the wind. A working bee is to be scheduled for a screen printing session to get a supply of Eden flags back in stock. Hopefully they will last a lot longer now.

Pictures show the timbers during preparation in the workshop and Peter Whiter in the cherry picker at the flagmast fitting the **stunsail boom** to the

left hand (or would that be portside?) yard arm in Imlay Street.

Thanks to: Mitre 10; Eden Paint Centre; Nick's Cranes; Eden Fishing Equipment; Charles Helmore; Sapphire Eng. & Whiter Bros

**1<sup>st</sup> Eden Sea Scouts 80th year this year too!**

...and we learn that the Eden Scout Group are ALSO celebrating 80 years this year, with their anniversary in August. Stay tuned



Nev Cowgill, current Leader in Charge for the 1<sup>st</sup> Eden Sea Scouts informs me that Scouts has been established in this community for 80 years this year.

What a coincidence!!

We do have a number of photos in the collection of the Eden scouts and cubs over the years, together with Maxwell Hinley's autograph book with the signatures of his fellow Eden scout members circa 1935.

The two images at left show;

Above: a Scouts street stall in front of the Twofold Bay Development League rooms in Imlay Street. On closer inspection you see a banner in the right hand window with the words "OLD TOMS". This is where Tom's skeleton was on public display before the museum was built and opened in 1939.

Below: a troupe of scouts line Imlay Street for a parade held possibly when the town water supply was instigated in the late 1940's.



## Shelving changeover in storage area



Collection Manager Jody White and volunteer Bruce Smith have all but completed the massive task of unloading the timber shelving, dismantling it and installing the metal shelving into the storage area. Jack Dickenson and Jeff Swane collected and delivered metal shelving from a supermarket in Tura

Beach, and the old timber shelving was donated to the Men's Shed for use there. All items were reloaded back onto the new shelving, some being repacked in the process. Meanwhile Jody reviewed the inventory of items on Mosaic and has recorded the new storage locations and photographed many items previously without

images on the database. This has been a very big project coupled with the necessary work in the adjacent under wharf area that also sustained severe termite damage. A big thank you to everyone involved for their work on this unexpected task over the last couple of months.



### Glowing Thanks from School Group

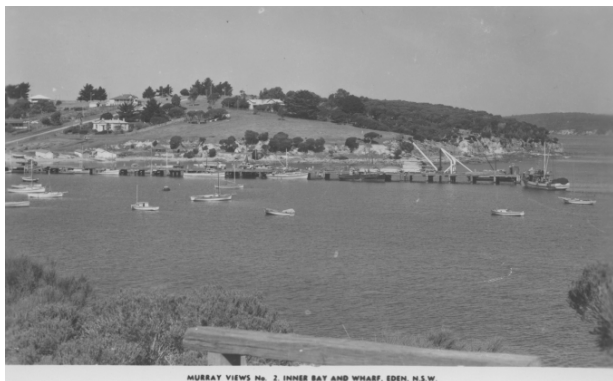
A thank you note from a local school teacher received recently after her class made an excursion to the museum shows the appreciation for our guides in making the students' visit more fulfilling.

*..This is an experience I will definitely be recommending to friends and family as well as colleagues at other schools.*

*Thanks again for lending us your precious time and expertise!*

*Well done Barry and the guides!*

### Snug Cove 1950's



These two images give us a glimpse of Snug Cove in the past.

**Note** above: no breakwater, no mooring jetty and the Customs House.

At right: brothers Maurice

and Kelly Woods mend nets on the main wharf; the vessel alongside is the *Foremost 17* bought from the UK with a crew of divers to salvage cargo from the wreck of the



*Cumberland* south East of Green Cape in 55 fathoms.

<http://maritime.heritage.nsw.gov.au/public/documents/cumberland.pdf>



## M80 News



Blue vests made at the Tulgeen workshop in Bega and embroidered with our M80 Logo were on show during the senior's week morning tea at the Museum on Friday 6<sup>th</sup> May. These vests are for all members and staff to use while "on duty", making us distinct and easily identifiable while in the museum or at outside functions and events!

### COMING EVENTS

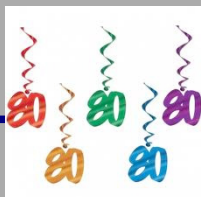
#### Standards Programme

Field Visit 10am to 1pm  
Thursday 11<sup>th</sup> August  
Workshop Narooma  
Friday 12<sup>th</sup> August

#### International Lighthouse Weekend 20 21<sup>st</sup> August

SEHGI 20<sup>th</sup> August

Whale Festival 2011  
28/29/30 October



EDEN KILLER WHALE  
MUSEUM

PO Box 304 EDEN NSW  
2551

PHONE:

02 64962094

FAX:

02 64962024

[promo@killerwhalemuseum.com.au](mailto:promo@killerwhalemuseum.com.au)

WE'RE ON THE WEB!

SEE US AT.

[www.killerwhalemuseum.com.au](http://www.killerwhalemuseum.com.au)

29 entries were received for the Oil and Acrylic section of the M80 Art and Craft Competition. Friends attended on Monday 2<sup>nd</sup> May and judging by Clive Cocum, saw Elaine McNight's "Dunes" the winner from a field of vibrant and interesting works. Coming categories are

June: Ceramic Pottery and Sculpture  
July: Knitting and Crochet; August: Woodwork; September: Quilting and Needlework; October: Mixed Craft: Jewellery; Paper; Leather; Entry forms for each category are to be with the Museum by the 20<sup>th</sup> of the previous month



### **Cavalcade Wall Progresses**



Another step in the progress with the concrete wall now complete and painted thanks to ESSCI members. Tile murals are being repaired in readiness for remounting. Planning continues for establishment of some lighting and landscaping, including a footpath in front of the wall. This will now allow completion of formal gates at the lower entrance to the grounds by the Lighthouse. A title panel and remounting of the tile murals onto the wall will complete the project. Stay tuned!!



For those local people celebrating their 80<sup>th</sup> birthday during 2011 Edén Killer Whale Museum is making a small presentation to include them in the museum's 80<sup>th</sup> festivities. To date 8 have been included; Eric Fletcher, Phyllis South, Thelma Cocks, Val Young, Barbara Fulton, Emil Polach, Mick Paltridge and Tom Price. We are happy to receive notice of any 80<sup>th</sup> birthdays still to come in 2011. Phil McGrath presented Barbara Fulton with her OBE *Old but Everlasting* (or One Beaut Edenite!) medallion and a telegram of course!

#### SCHEDULE OF MONTHLY MEETINGS AT EDEN KILLER WHALE MUSEUM

BUSINESS MEETING	2ND WEDNESDAY 7PM	MUSEUM THEATRETTE
CURATORIAL MEETING	1ST MONDAY 1PM	MUSEUM LIBRARY
FRIENDS MEETING	3RD WEDNESDAY 9:30AM	MUSEUM LIBRARY