



EDEN KILLER WHALE MUSEUM / 02 64962094 / EMAIL [promo@killerwhalemuseum.com.au](mailto:promo@killerwhalemuseum.com.au)

## Special Interest Articles:

- ❖ AUSTRALIA DAY
- ❖ TERMITES!
- ❖ CAVALCADE PROGRESS



## GOOD NEWS: Celebrations for the Museum's 80<sup>th</sup> Year are Underway!

Revelers enjoyed the first of our M80 events at the Museum on New Years Eve. More than 80 people chose our Shine party to see in 2011, on a balmy summers evening under the sails at Eden Killer Whale Museum. "Easy Streets" provided an easy listening programme of musical entertainment throughout the night, and guests danced the night away.

Friends provided some tasty snacks and a self-serve tea and coffee table, people brought their own drinks.

The ESSCI Fireworks were easily visible from the front balcony at midnight and, all in all,

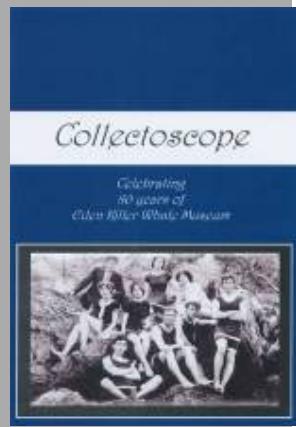


the crowd was very happy and appreciated this wonderful venue.

A BIG thank you to all members and friends who worked hard to make the Shine Party the success it

was, especially Jack Rob and Bob for the setting up and packing away of the dance floor and furniture for the night.

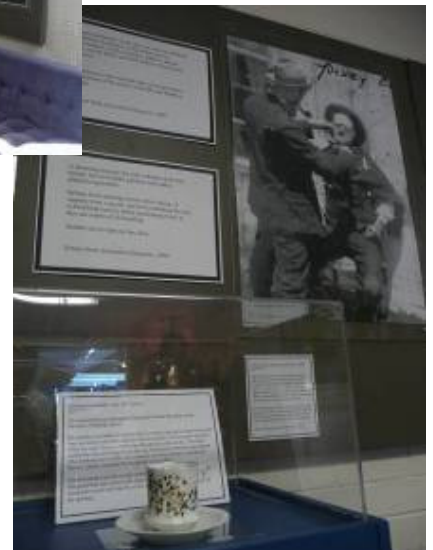
More pictures on page 2.



## "Collectoscope" focuses on the collection



Collection Manager Jody White has developed and mounted "Collectoscope" to display some of the rarely exhibited items in the Museum's collection during this special year. This attractive exhibition includes almost life size enlargements of some of the photographs of W.T Hall which Jody has "constructed" herself by using the technology available within the museum's computer and printing equipment. These images provide a great accompaniment for very interesting items as varied as underclothing to rabbit traps! Jody has also produced a catalogue to accompany this exhibition.





## New Years Eve

Rt: EKWM Friends coordinator Marg Sheaves enjoys a cuppa during the festivities;  
Below: Part of the crowd at the NYE Shine Party  
Below Rt: Band Easy Streets in action in the Founders Gallery where the dance floor was set up.



## Australia Day at the Eden Oval.....unkind weather but an enthusiastic crowd



# Owen Allen Challenge Trophy revived for Australia Day 2011



Australia Day 2011 saw the return of the Owen Allen Challenge to the Eden Cricket Oval. Despite very poor weather conditions a pleasing crowd of players and supporters enjoyed a day of limited over cricket played by teams of 8 including ladies and youngsters. Eventual winners were the team from the Great Southern Inn whose name will be the first of the new plaques attached to the Trophy which was originally sponsored by Owen Allen in the 1960's.

Owen's daughter Ros Butt attended to present the trophy at the end of the day, telling of her memories of past contesting teams and the fun games played in the 1960's and '70's.

We acknowledge Drew Mudaliar (capt) and the Eden Cricketers for their work in preparing and conducting the competition, which was an ideal background for Eden's Australia Day festivities.



Thanks to Dennis Coon for the above photo of the Eden Cricket team in 1971/72  
 LtoR Back Owen Allen (sponsor) Barry Bell, Bruce Wadell, Noel Love, Colin Veness, Kevin Turnbull, Bob Snowden, Glen Clements, Keith Parnell.  
 Front:Max Sawers, Robert Edwards, Francis Turnbull (scorer), Dick Gilmore, Bob Bridges, Russel Wadell, John Edwards.



Clockwise from Left;  
 Ross & Anne Chester Citizens of the year;  
 Eden Cub Scouts raising the flag;  
 Drew Mudaliar, Eden Cricket Club Captain, Matthew Bell, Capt. Great Southern Inn winning team & Ros Butt, daughter of Owen Allen trophy sponsor at the presentation.  
 Brian Dixon Australia Day Ambassador with Helen Hillier and Di Swane (obscured) of Art on Imlay the Community Group of the Year





**EDEN KILLER WHALE MUSEUM**

**EXHIBITIONS**

“Collectoscope”  
February to September 2011

“Built for the Bush”  
Sept to Nov 2011

**COMING EVENTS**

Friday 25<sup>th</sup> Feb  
Standards Meeting Bega

March 20<sup>th</sup> Seniors Week  
Ecumenical Service and  
Breakfast at Rotary Park  
followed by Cat Balou Cruise

March 22<sup>nd</sup> Seniors Week  
Museum morning tea  
followed by town bus tour  
and lunch at Men’s Shed

9-13 May 2012 Visit to Eden  
by  
H.M Bark ENDEAVOUR  
on her circumnavigation of  
Australia  
[www.endeavourvoyages.com.au](http://www.endeavourvoyages.com.au)

EDEN KILLER WHALE  
MUSEUM

PO Box 304 EDEN NSW  
2551

PHONE:

02 64962094

FAX:

02 64962024

[promo@killerwhalemuseum.com.au](mailto:promo@killerwhalemuseum.com.au)

WE’RE ON THE WEB!

SEE US AT.

[www.killerwhalemuseum.com.au](http://www.killerwhalemuseum.com.au)

# BAD NEWS: Termites invade our collection

While we are monitoring and treating termite infestation in adjacent areas of the building it was a shock for collection manager Jody White to discover that they had invaded the collection storage area. (Pictured) With quick action the immediate area was cleared and Pest



Controller Phillip Innes was called to inspect and advise on this continuing problem. An appeal has once again gone to the Bega Valley Shire Council to cooperate by removing the Woollybutt tree on the Albert Terrace boundary where it is believed the

termite problem originates. At the time of publication there sadly had been no positive response. In the meantime this latest infestation has prompted the executive decision to purchase second hand metal shelving for use in the Storage area. This serious

matter has been addressed to the best of the staff and committee’s ability to this point and continues to be monitored carefully. Work is underway also to replace termite damage in the storage area under the wharf structure with treated pine timbers. *White ants and Woollybutts!!!*

# CAVALCADE PROGRESS



The above picture shows the form work ready for concrete on the 31<sup>st</sup> January. The first concrete pour has since occurred on 4<sup>th</sup> February and subsequent pour on the 16<sup>th</sup>. We await the “unveiling! This exciting and long awaited project

will finally formalize the Albert Terrace frontage and give the museum a much tidier appearance and a more secure boundary on this side. The Tile murals will be mounted on the long sections of this wall with their explanatory panels

beside them on the shorter sections. It is planned to create an introductory panel with a tribute to Alex McKenzie at the top end of the cavalcade”

**EDEN KILLER WHALE MUSEUM  
SCHEDULE OF MEETINGS**

- Business Meeting      2<sup>nd</sup> Wednesday      7pm Museum Theatre
- Friends Meeting        3<sup>rd</sup> Wednesday      9:30am Museum Library
- Curatorial Meeting     1<sup>st</sup> Monday            1pm Museum Library