

Special Interest Articles:

Cavalcade Wall

Photo of Bert Egan

M80 Art and Craft

May SEHGI meeting

*ABC Radio Presenter
Visits Museum.*

A presentation evening is to be held at the Museum 14th October 5:30 to 7:30pm. Music and Choral presentations from Sing Australia Choir with piano accompaniment. Tastings of local wines and specialist cheeses and delicacies! Prizes awarded to all winners of the M80 Art and Craft Competition.



Vale Herman Boller



Herman with Noelene Trevanion at the laying of the foundation stone

It is with great sadness that we mark the passing of Herman Boller on 1st August 2011.

Herman had been a member of the museum committee for many years, holding executive positions at times and later dedicating many hours to guiding in the galleries and lighthouse. Herman especially enjoyed taking school groups through the exhibitions and talking about the whaling days and the different species and biology of whales seen here on the coast. As secretary he often corresponded with students researching local history and/or natural history, with comprehensive replies to their many questions. Our sympathies are extended to Noelene and the Boller family.

Vale Herman

Further Progress with Cavalcade Wall

New gates and fence installed by Rex Bloch in early July finish the boundary nicely. These are powder coated to match the existing gate between the lighthouse and the museum building. These gates allow access to both levels of the grounds through a personal gate against the lower side of the lighthouse, and vehicular access through a larger gate adjoining. On July 26th Damien Foat Engineering commenced another task of this project with the mounting of the interpretive boards for the tile murals. These together with the frames for the murals give a good

impression of the finished product. Removal of the old fence and levelling out of the pile of dirt from the wall footings shows a much more attractive space inside the wall. BVSC have also removed the picnic table

from under the woollybutt tree. By the time we go to print the remainder of the murals will be mounted and now for the finishing touch of the title panel!!
More pictures page 3



ABC Statewide Drive features EKWM in July



Bonita Brown, ABC Radio presenter meets Old Tom during her first visit to EKWM

ABC radio presenter Bonita Brown broadcast her programme from the Eden Marine Rescue station on Monday 18th July. Featuring the work of volunteers in NSW regional communities during a drive about Country NSW, Bonita asked about the work Museum volunteers do and their contribution to the overall success of the museum. Earlier in the day Jenny Drenkhahn showed Bonita through the museum and she

was suitably impressed with the amount she was able to see in the limited time she had. Bonita recorded around half an hour of content, pieces of which she said would be used in future statewide radio programmes on local ABC.

All the type of promotion we simply couldn't pay for! Thanks again ABC!



M80 ART & CRAFT



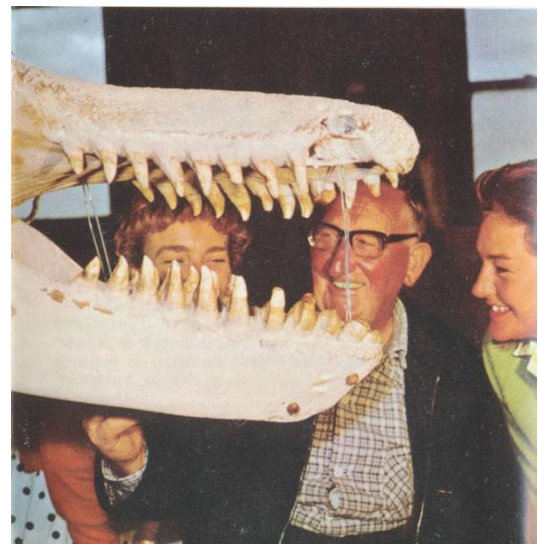
30 entries in the knitting section for July was a very pleasing response for M80 organisers. A large variety of knitted items were received, from a tiny penny jug! to a shawl large enough to cover a single bed. The winning entry was a beautiful baby's layette knitted by Yvonne Woods. Currently the 13 entries in the woodwork section are on display. Once again a large variety of items and

won by Don Jaffrey with his cabinet of drawers in silver banksia and blackwood. The two categories still to be contested are, needlework and quilting (September) and mixed craft of paper leather etc October). A presentation evening "Dare to Dream" is being organised for Friday 14th October from 5:30pm to 7:30pm, when the prizes for winners of the 10 categories will be awarded.

Another photo unearthed of Bert Egan with Old Tom .

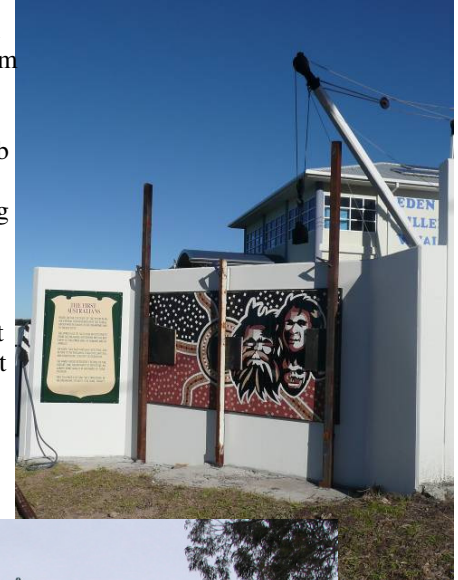
Collection Manager Jody White discovered this photo on a promotional brochure for the Far South Coast amongst Imlay Shire Council papers "rescued" from under the Access Centre last year. This shows a younger Bert in his element, very happily showing visitors the unique formation of Old Tom's jaws and teeth.

Photo Catalogued in EKWM collection no EM4967(10)



WHAT A PROJECT? AND HOW NICE TO HAVE IT ALMOST FINISHED?

This Cavalcade of Eden's History project was commenced more than 12 years ago with Life Member, the late Alex McKenzie working in a shipping container near his home in the Garden of Eden Caravan Park, creating the beautiful tile murals. An application for a boundary readjustment to allow more space within the grounds was successful but to get a wall designed and built was to take much longer. The murals were "temporarily" mounted on a timber frame in order that Alex would see them displayed publicly. John Moffatt did the structural engineering drawings and Rob Webb surveyed the site repeatedly during the planning process before finally on 22nd November 2010 work commenced. With a footpath and some landscaping in front and a title on the panel nearest the museum it will complete the Eastern boundary beautifully.





EDEN KILLER WHALE MUSEUM

COMING EVENTS

SEHGI Meeting

Saturday 20th August
Hosted by Bega Pioneers
Museum

**International Lighthouse
W'end**

20th and 21st August

**M80 Art & Craft
Presentation Evening**

EKWM
14th October 5:30 to 7:30pm

**Eden Whale Festival:
Opening**

Friday 28th Oct 3pm

**Antiques and Collectibles
Appraisal Day**

Sunday 30th Oct 11am to
3pm

**BBQ with Young Endeavour
Crew**

Monday 31st Oct Lunch

EDEN KILLER WHALE
MUSEUM

PO Box 304 EDEN NSW
2551

PHONE:

02 64962094

FAX:

02 64962024

promo@killerwhalemuseum.com.au

WE'RE ON THE WEB!

SEE US AT:

www.killerwhalemuseum.com.au

SEHGI visits Delegate

The May meeting was hosted by Bombala at Delegate, beginning with a wonderfully detailed exploration of the Early Settlers Hut as guests of the management group there. The Early Settlers' Hut at Delegate Station is believed to be the first European dwelling on the Monaro and together with a hearty morning tea we were

given a very informative tour of the building. One artefact kept from the restoration was a small hand made doll that has been enclosed in a glass case. Heather Kozak wrote this moving poem about her. The gathering proceeded to the Borderline Gallery and on to the Delegate School of Arts where we had lunch and our meeting.

Right:
Rag doll found at settlers hut



The Lady of the Hut
By Heather Kozak

In a corner of the hut she was found
Forgotten, forlorn, alone,
Easily missed as she lay on the ground
A scrap of a doll, hand sewn.

Just a simple toy made of hope and rags,
Stitched by some settler's wife.
Not a fancy thing with shoes and handbags,
She's from a different life.

Clothed all in hessian with a painted face
Crudely shaped and made by hand
She gives us a sense of a time and place
Where settlers toiled on the land.

She reminds us all of another time,
Before cars and mobile phones,
When wasting things was a capital crime,
And kids played with knucklebones.

That grubby old doll is more beautiful
Than a Barbie or a bride
She comes from a folk more dutiful
Who had little but their pride

She was made with a love that can't be bought,
To bring a small child some pleasure.
Her resourceful maker would never have thought
She'd made an antique treasure.

Nowadays modern folk confuse want and need
And we want so many things
But cast your minds back, let the years recede
Learn the lessons this little doll brings

With the reshuffle of the collection during shelving replacement and the constant addition of items including, more recently, Imlay Shire Council documents, our storage space has been filled to capacity!
Collection storage space



EKWM STORAGE

and Archive storage space is now critically limited. Some relief may come with some deaccessioning and/or repositioning of larger items into the grounds. Now that the Cavalcade Wall is complete, consideration can be given to some external displays.

EDEN KILLER WHALE MUSEUM SCHEDULE OF MEETINGS

Monthly Business Meeting	7pm	2 nd Wednesday	Museum theatre
Monthly Curatorial meeting	1pm	1 st Monday	Museum Library
Monthly Friends Meeting	9:30am	3 rd Wednesday	Museum Library